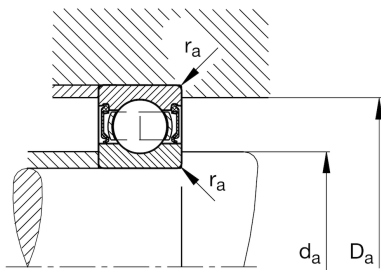
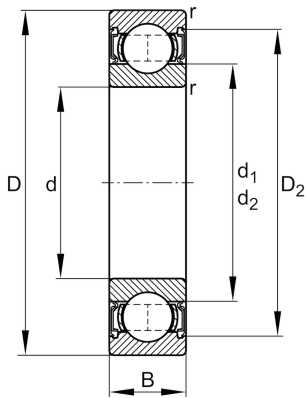
**FAG****6302-2RSR**

Deep groove ball bearing

Schaeffler ID:  
0167227010000Deep groove ball bearing 63...-2RSR,  
single row, seals, steel sheet metal cage

## Technical information

**Dimensions**

$r_{\min}$	1 mm	Minimum chamfer dimension
$D_2$	35 mm	Caliber diameter outer ring
$d_1$	23.6 mm	Shoulder diameter inner ring
	85.5 g	Weight

**Main Dimensions & Performance Data**

$d$	15 mm	Bore diameter
$D$	42 mm	Outside diameter
$B$	13 mm	Width
$C_r$	12,000 N	Basic dynamic load rating, radial
$C_{0r}$	5,300 N	Basic static load rating, radial
$C_{ur}$	360 N	Fatigue load limit, radial
$n_G$	11,300 1/min	Limiting speed

**Mounting dimensions**

$d_{a\min}$	20.6 mm	Minimum diameter shaft shoulder
$D_{a\max}$	36.4 mm	Maximum diameter of housing shoulder
$r_{a\max}$	1 mm	Maximum fillet radius

**Calculation factors**

$f_0$	12	Calculation factor
-------	----	--------------------

**Temperature range**

$T_{\min}$	-20 °C	Operating temperature min.
$T_{\max}$	110 °C	Operating temperature max.